

CITINOX[®] plus

PEŁNA CHATA
Dystrybutor w Polsce

... eleganckie rozwiązanie z dystansem

citinox plus® oferuje gotowe rozwiązanie praktycznie dla każdego sposobu montażu szyldów.

Poprzez bliski kontakt z praktyką system ulega stałej rozbudowie i udogodnieniom.

Cały system jest kompletnie produkowany w Niemczech i podlega stałej kontroli jakości.

Jego obszerna funkcjonalność oraz prosta elegancja nie znajdują sobie równych.

Połączenie stali nierdzewnej z perfekcyjnie obrobioną powierzchnią zapewniają systemowi doskonały wygląd.

Montaż do ściany

Mocowanie tablic różnych rozmiarów i grubości z dystansem od ściany

Montaż semaforów

Wsporniki do mocowania szyldów typu semafor

Montaż do prętów

Montaż tablic do ściany lub sufitu przy pomocy systemu prętów ze stali nierdzewnej

Montaż na linkach

Montaż tablic do ściany lub sufitu przy pomocy systemu linek

Wolnostojące









Mocowania na stawiania tablic na biurku i tablice wolnostojące

Elementy dodatkowe

Stabilizacja i rozszerzenie elementów standardowych

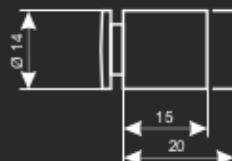
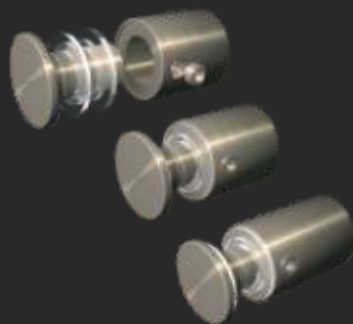
PEŁNA CHATA
Dystrybutor w Polsce

citinox[®] plus

| | | Strona | Nazwa | Rozmiar | Opis | | | | |
|---------------------------------------|---|---|-----------------------|---|--|---------------------------------------|-----------|------|---------|
| Imbus zabezpieczający przed kradzieżą |  |  | 4 | Florenz | R 14 | | | | |
| | | | 4 | Rom | R 14 | Zaokrąglona główka | | | |
| | | | 4 | Stuttgart | R 18 | | | | |
| | | | 5 | Bonn | R 14 | | | | |
| | | | 5 | Berlin | R 14 | | | | |
| | | | 5 | Kiew | R 14 | Polerowany | | | |
| | | | 6 | Ufa | R 15 / 20 | Ścięcie | | | |
| | | | 7 | Zürich | R 30 | | | | |
| | | | 7 | Rhodos | R 30 | Część dodatkowa do Zürich | | | |
| | | | 9 | Liverpool | □ 15 / 25 | Polerowany kwadrat | | | |
| 9 | London | ○ 17 / 27 | Polerowany sześciokąt | | | | | | |
| Przykręcane |  |  | 8 | Nürnberg | R 16 | Do tablic bez otworów | | | |
| | | | 8 | Lübeck | R 20 | Do tablic bez otworów | | | |
| | | | 8 | Palermo | R 20 | Do tablic bez otworów | | | |
| | | | 10 | Wien | R 11 | | | | |
| | | | 10 | Linz | R 13 | | | | |
| | | | 10 | St. Petersburg | R 14 | | | | |
| | | | 11 | Madrid | R 20 | | | | |
| | | | 11 | München | R 40 | | | | |
| | | | 12 | Samara | R 15 | Do montażu wstępnego | | | |
| | | | 12 | Moskwa | R 20 | Do podwójnych tablic | | | |
| Montaż semaforów |  |  | 14 | Bern | R 10 / 15 / 18 | Zatyczka zaokrąglona | | | |
| | | | 14 | Genf | R 10 / 15 / 18 | Zatyczka płaska | | | |
| | | | 15 | Basel | R 10 / 15 / 18 | Tuleja dystansowa (dystans od ściany) | | | |
| | | | 16 | Gdańsk | R 17 | | | | |
| | | | 16 | Poznań | R 18 | | | | |
| | | | 17 | Kopenhaga | | | | | |
| | | | 18 | Duisburg | | | | | |
| | | | Montaż do pręta |  |  | 19 | Lyon | R 12 | |
| | | | | | | 19 | Stockholm | R 14 | Zginany |
| | | | | | | 20 | Dublin | R 20 | |
| 20 | Belfast | R 20 | | | | | | | |
| 21 | Leipzig | R 17 | | | | Do wiszących tablic | | | |
| 21 | Krakau | R 18 | | | | Do wiszących tablic | | | |
| 22 | Apeldoorn | R 11 | | | | Montaż między prętem a tabliczką | | | |
| 22 | Rotterdam | R 14 | | | | Montaż między prętem a tabliczką | | | |
| 22 | Den Haag | R 17 | | | | Montaż między prętem a tabliczką | | | |
| 23 | Utrecht | R 11 | | | | Montaż między prętem a 2 tabliczkami | | | |
| 23 | Amsterdam | R 14 | | | | Montaż między prętem a 2 tabliczkami | | | |
| 23 | Eindhoven | R 17 | | | | Montaż między prętem a 2 tabliczkami | | | |
| 24 | Burgas | R 11 | | | | Tabliczka montowana przed prętem | | | |
| 24 | Sofia | R 15 | | | | Tabliczka montowana przed prętem | | | |
| 24 | Varna | R 15 | | | | Tabliczka montowana przed prętem | | | |
| 25 | Lanzarote | R 14 | Sklep | | | | | | |
| 25 | Teneriffa | R 14 | Sklep podwójny | | | | | | |

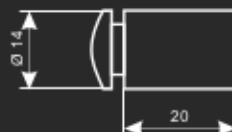
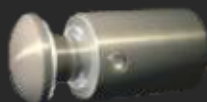
| Opis | Rozmiar | Nazwa | Strona | | |
|---------------------------------------|---------|---|--------|--|------------------------------------|
| Automatyczne mocowanie | R 11 | Marseille | 26 | | ■ Montaż na linie |
| | R 12 | Paris | 26 | | |
| | R 12 | Paris A | 26 | | |
| | R 14 | Nizza | 27 | | |
| | R 14 | Helsinki | 27 | | |
| Gwint | R 14 | Helsinki | 27 | | |
| Nadaje się do szkła | R 11 | Oslo | 28 | | |
| | R 17 | Dortmund | 28 | | |
| | R 18 | Frankfurt | 28 | | |
| | R 11 | Schwerin | 29 | | |
| | R 14 | Oldenburg | 29 | | |
| Montaż do linki | R 11 | Lüttich | 30 | | |
| Montaż do linki | R 14 | Brüssel | 30 | | |
| Montaż do linki | R 17 | Gent | 30 | | |
| Do podwójnych tablic z otworami | R 15 | Budapest | 31 | | |
| Połączenie wiszących swobodnie tablic | R 18 | Istanbul | 31 | | |
| Montaż linki | R 11 | Arad | 32 | | |
| Montaż linki | R 15 | Bukarest | 32 | | |
| Montaż do linki - podwójny | R 15 | Konstancja | 32 | | |
| Montaż do linki - podwójny | R 11 | Anderlecht | 33 | | |
| Montaż do linki - podwójny | R 14 | Antwerpen | 33 | | |
| Montaż do linki - podwójny | R 17 | Brügge | 33 | | |
| Sklep | R 14 | Ibiza | 34 | | |
| Sklep - podwójny | R 14 | Mallorca | 34 | | |
| Do tablic z otworami | R 11 | Salzburg | 35 | | ■ Wolnostojące tabliczki na biurko |
| Do tablic z otworami | R 14 | Graz | 35 | | |
| Do tablic bez otworów | R 18 | Bremen | 36 | | |
| Do podwójnych tablic bez otworów | R 18 | Kiel | 36 | | |
| Do tablic bez otworów | R 18 | Hamburg | 37 | | |
| System do witryn | Szyna | Donau - Isar | 38 | | ■ Części dodatkowe |
| System do witryn | | Korfu | 38 | | |
| | R 40 | Athen | 39 | | |
| | | Kos | 39 | | |
| | | Kreta | 40 | | |
| Tabliczka wolne/zajęte | | | | | |
| | | Średnica / widoczny rozmiar | | | ■ Legenda |
| | | Średnica linki /pręta | | | |
| | | Kolor | | | |
| | | Dystans od ściany | | | |
| | | Wielkość zalecanego otworu w tablicy | | | |
| | | Możliwa grubość tablicy | | | |
| | | Odległość nawiercanego otworu od krawędzi tabliczki | | | |
| | | Wielkość klucza | | | |
| | | Opakowanie | | | |
| | | Można łączyć z ... | | | |

FLORENZ



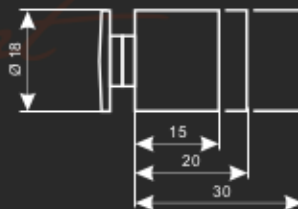
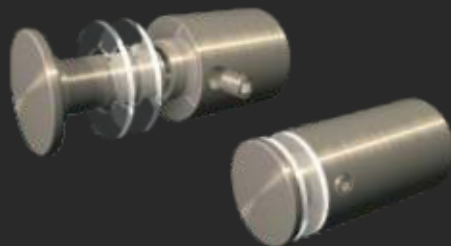
- Florenz 15 / 1- 6
- Florenz 15 / 8-12
- Florenz 20 / 1-12
- Ø 14 mm
- 15 / 20 mm
- 1...12 mm
- Ø 10...11 mm

ROM BALLIGER KOPF






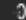


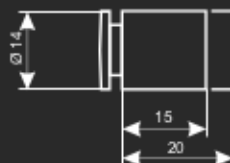
- Rom 20
- Ø 14 mm
- 20 mm
- 1...12 mm
- Ø 10...11 mm

STUTTGART

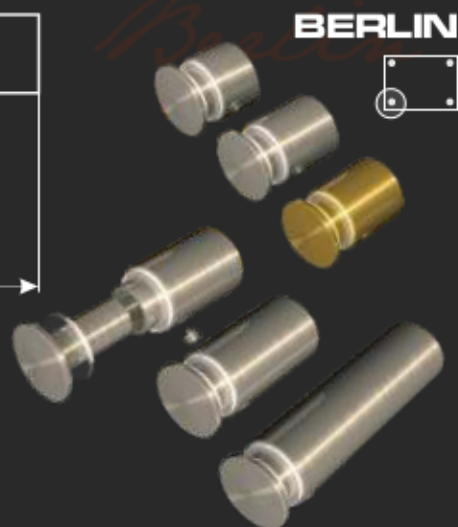
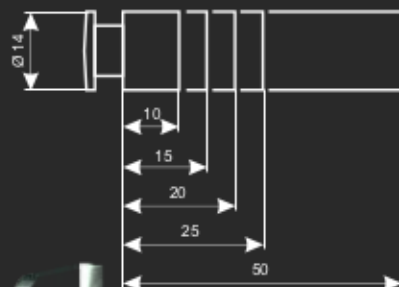



- Stuttgart 15/ 2- 5
- Stuttgart 15/ 6-10
- Stuttgart 20/ 3-10
- Stuttgart 20/ 10-18
- Stuttgart 30/ 3-18
- Ø 18 mm
- 15 / 20 / 30 mm
- 2...18 mm
- Ø 11 mm

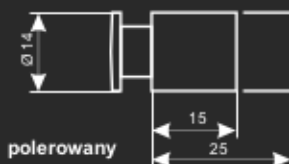
-  **Bonn 15**
-  **Bonn 20**
-  \varnothing 14 mm
-  15 / 20 mm
-  2...5 mm
-  \varnothing 11 mm





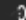


-  **Berlin 10 / 6- 8**
-  **Berlin 15 / 5-10**
-  **G Berlin 15 / 5-10**
-  **Berlin 20 / 5-10**
-  **Berlin 25 / 5-10**
-  **Berlin 50 / 5-10**
-  \varnothing 14 mm
-  10/15/20/25/50 mm
-  5...10 mm
-  \varnothing 11 mm

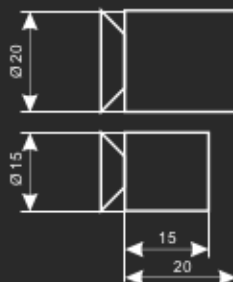
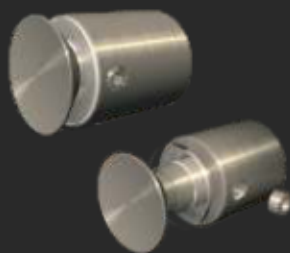


-  **Kiew 15**
-  \varnothing 14 mm
-  15 mm
-  6 mm
-  \varnothing 10 mm



-  **Kiew 25**
-  \varnothing 14 mm
-  25 mm
-  6 / 12 mm
-  \varnothing 10 mm

UFA



 **Ufa 20**

 Ø 20 mm

 20 mm

 5...15 mm

 Ø 12 mm

Podfrezowanie 45° na stronie Ø 21 mm

 **Ufa 15**

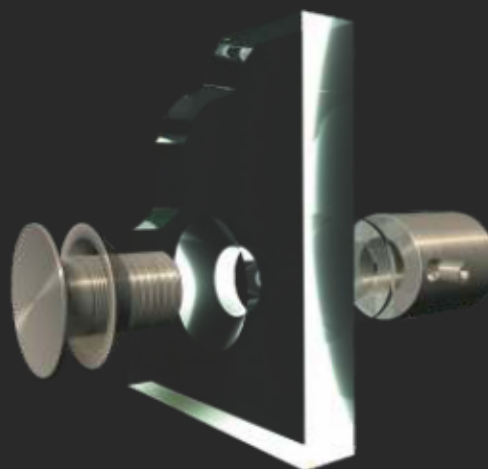
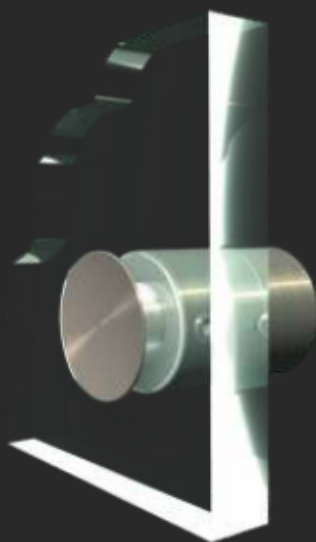
 Ø 15 mm

 15 mm

 5...10 mm

 Ø 9 mm




Podfrezowanie 45° na stronie Ø 16 mm







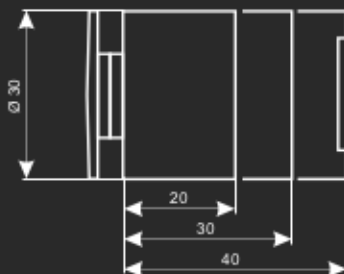
PEŁNA CHATA

Dystrybutor w Polsce

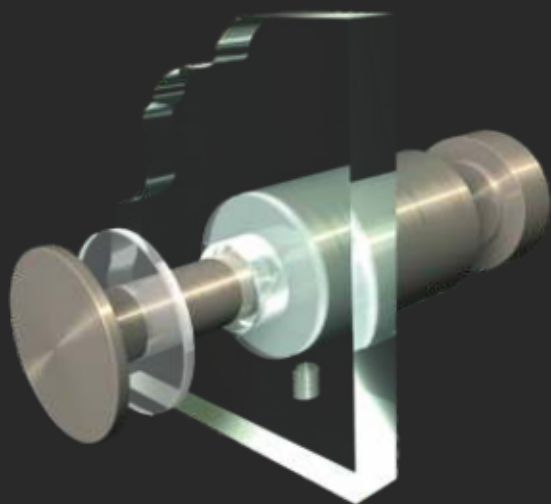
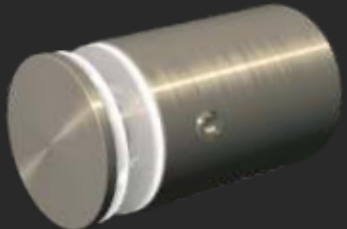
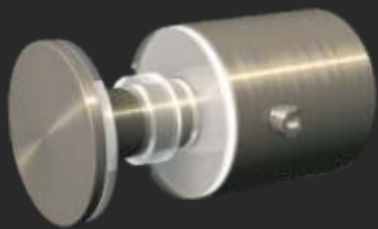
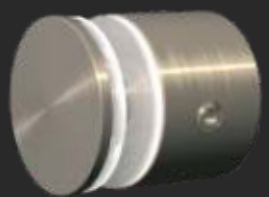
citinox[®]
plus

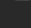
 Zürich 20 / 5- 8
 Zürich 30 / 5-12
 Zürich 40 / 5-18

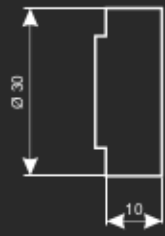
 Ø 30 mm
 20 / 30 / 40 mm
 5...18 mm
 Ø 18...20 mm



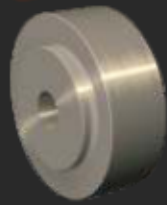
Zürich **ZÜRICH**



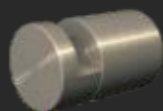
 Rhodos
 Ø 30 mm
 + 10 mm
 Zürich 40



Rhodos **RHODOS**



NÜRNBERG

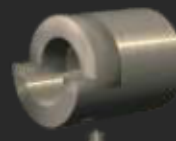
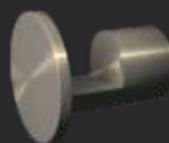


Nürnberg 5
Nürnberg 6
Nürnberg 8



Ø 16 mm
16 mm
5 / 6 / 8 mm
nie dotyczy

LÜBECK

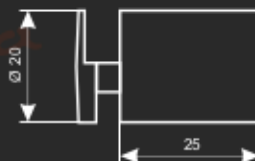
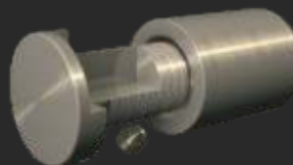
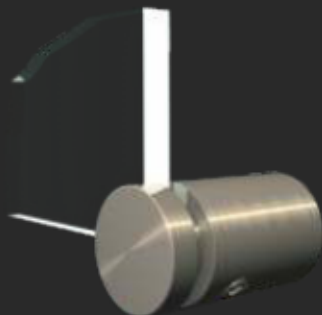


Lübeck



Ø 20 mm
21 / 19 / 17 mm
4 / 6 / 8 mm
nie dotyczy

PALERMO




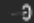


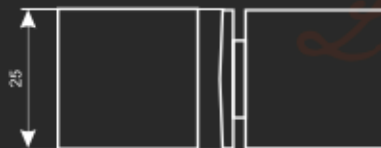
Palermo






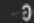
Ø 20 mm
25 mm
4...8 mm
nie dotyczy

Liverpool 25/ 2-10

-  25 mm
-  25 mm
-  2...10 mm
-  Ø 16 mm

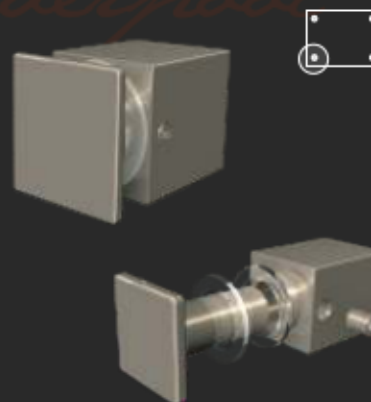


Liverpool 15/ 2- 5
Liverpool 15/ 6-10




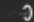
-  15 mm
-  15 mm
-  2...10 mm
-  Ø 11 mm

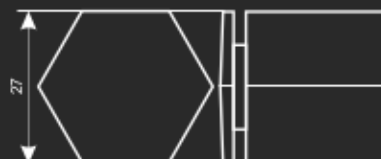


LIVERPOOL



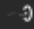



London 25/ 2-10

-  27 mm
-  25 mm
-  2...10 mm
-  Ø 16 mm

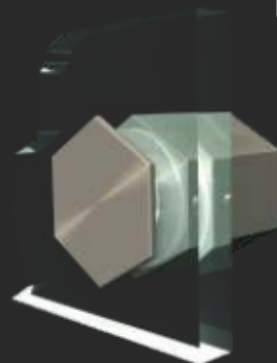


London 15/ 2- 5
London 15/ 6-10

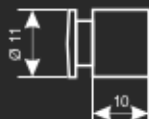
-  17 mm
-  15 mm
-  2...10 mm
-  Ø 11 mm






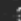


LONDON

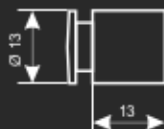
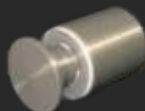







WIEN

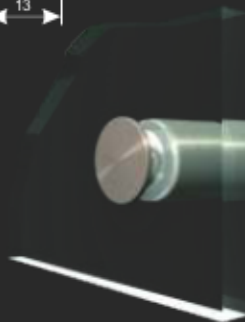


| | |
|---|------------|
|  | Wien / 1-4 |
|  | Wien / 5-8 |
|  | Ø 11 mm |
|  | 10 mm |
|  | 1..8 mm |
|  | Ø 9 mm |

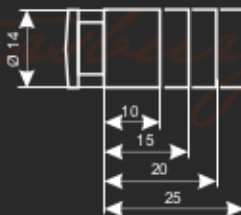
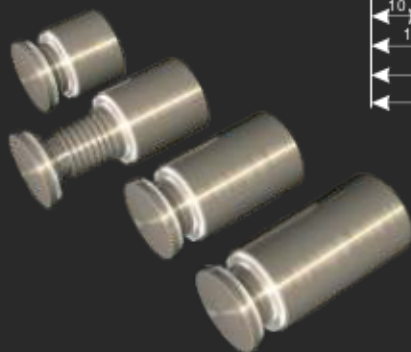
LINZ















| | |
|---|--------------|
|  | Linz |
|  | Ø 13 mm |
|  | 13 mm |
|  | 3..8 mm |
|  | Ø 10...11 mm |



St. PETERSBURG

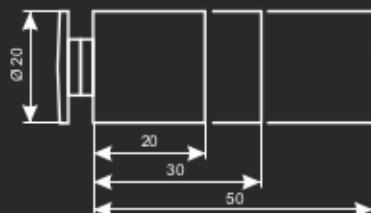


| | |
|---|--------------------------|
|  | St. Petersburg 10 / 3- 8 |
|  | Ø 14 mm |
|  | 10 mm |
|  | 3..8 mm |
|  | Ø 11 mm |
|  | St. Petersburg 15 / 3-12 |
|  | St. Petersburg 20 / 3-12 |
|  | St. Petersburg 25 / 3-12 |
|  | Ø 14 mm |
|  | 15 / 20 / 25 mm |
|  | 3..12 mm |
|  | Ø 11 mm |

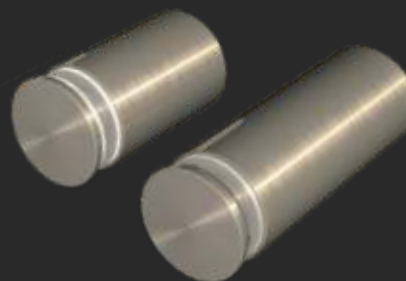
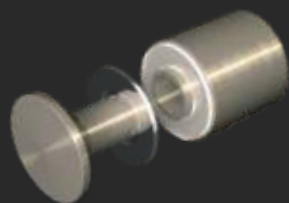


Madrid 20
Madrid 30
Madrid 50

Ø 20 mm
20 / 30 / 50 mm
3...18 mm
Ø 11...14 mm

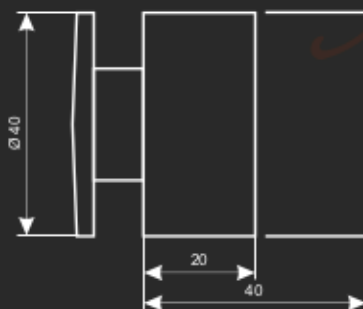


MADRID

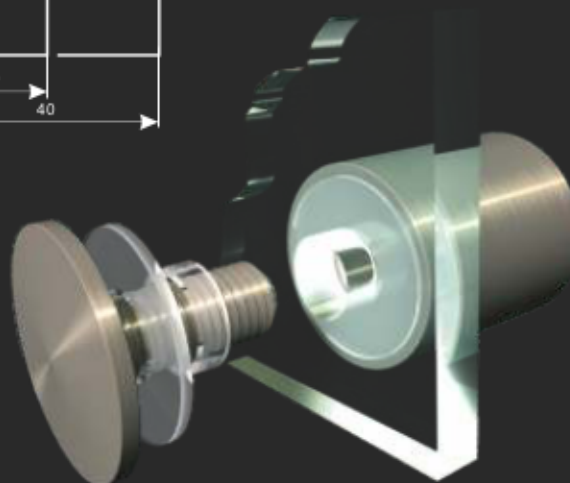
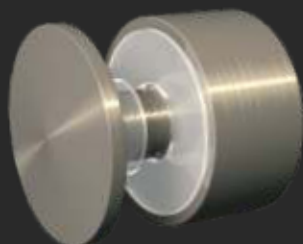


München 20 / 8-12
München 40 / 8-20

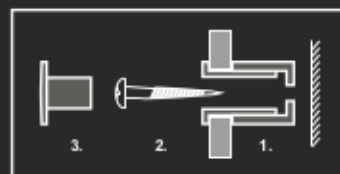
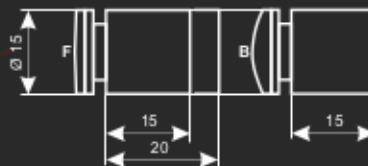
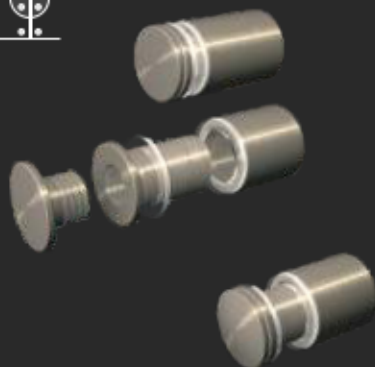
Ø 40 mm
20 / 40 mm
8...20 mm
Ø 20 mm



MÜNCHEN



SAMARA



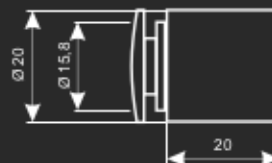
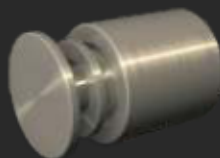
- Samara 15 F / 2-12
- Samara 20 F / 2-20

- Ø 15 mm
- 15 / 20 mm
- 2...20 mm
- Ø 12 mm

- Samara B / 2-12

- Ø 15 mm
- 15 mm
- 2...12 mm
- Ø 12 mm

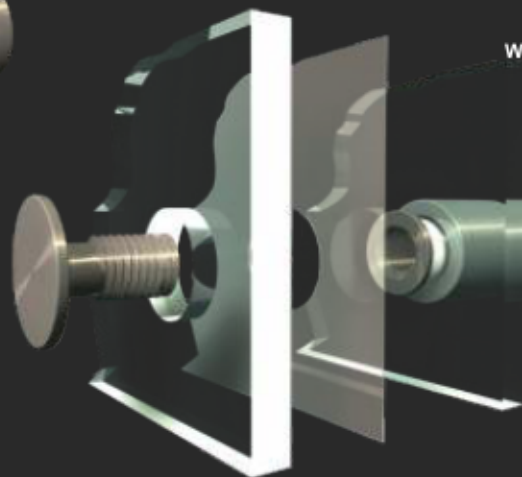
MOSKAU






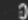
- Moskau

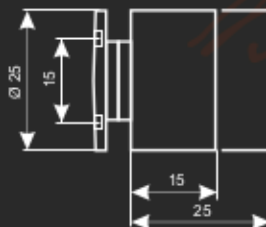
- Ø 20 mm
- 20 mm
- 2 x 10 mm
- Ø1 12,5 mm
- Ø2 16,5 mm

Wyłącznie do tworzyw sztucznych

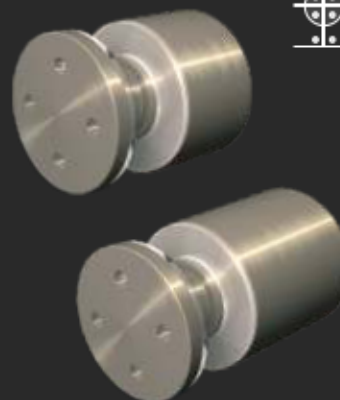


Barcelona 15 / 3-10




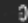
| | |
|---|-----------|
|  | Ø 25 mm |
|  | 15 mm |
|  | 3...10 mm |
|  | Ø 16 mm |







BARCELONA

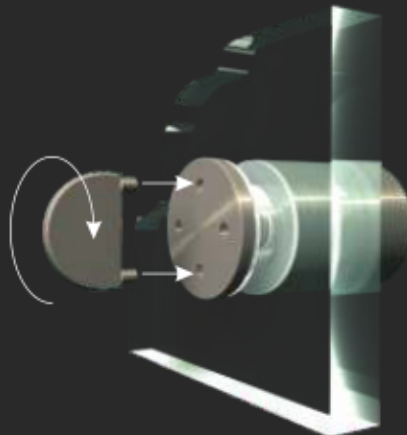


Barcelona 15 / 12-18




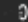
| | |
|---|------------|
|  | Ø 25 mm |
|  | 15 mm |
|  | 12...18 mm |
|  | Ø 16 mm |

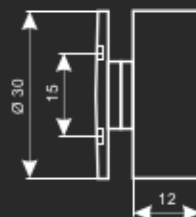
Barcelona 25 / 3-18

| | |
|---|-----------|
|  | Ø 25 mm |
|  | 25 mm |
|  | 3...18 mm |
|  | Ø 16 mm |

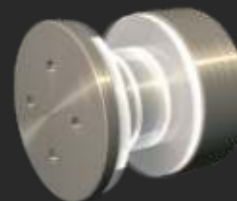


Köln / 8-20

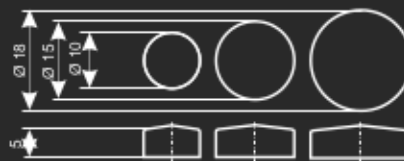
| | |
|---|-----------|
|  | Ø 30 mm |
|  | 12 mm |
|  | 8...20 mm |
|  | Ø 20 mm |



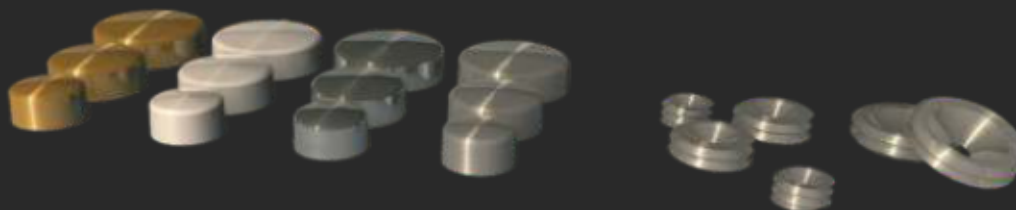
KÖLN



BERN



- Stal nierdzewna VA
- Chrom polysk GC
- Chrom mat MC
- Złoty polysk GO
- Ø 10 / 15 / 18 mm



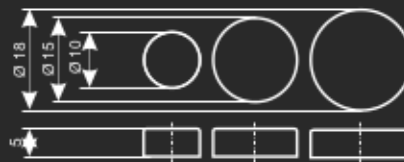
Bern-18-VA
Bern-15-VA
Bern-10-VA

Bern-18-GC
Bern-15-GC
Bern-10-GC

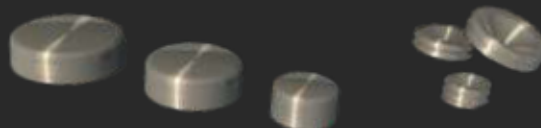
Bern-18-MC
Bern-15-MC
Bern-10-MC

Bern-18-GO
Bern-15-GO
Bern-10-GO

GENF







- Stal nierdzewna VA
- Ø 10 / 15 / 18 mm



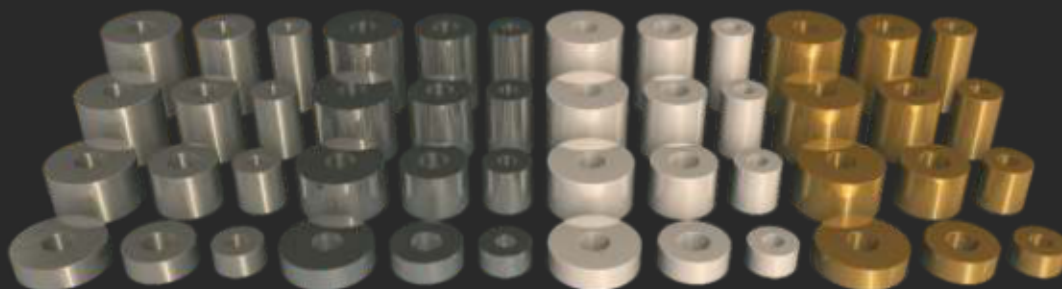
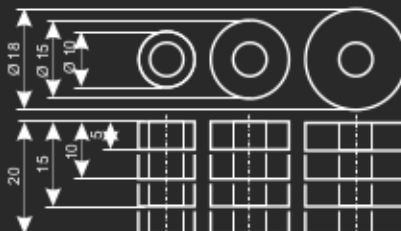
Genf-18-VA
Genf-15-VA
Genf-10-VA

PEŁNA CHATA
Dystrybutor w Polsce

citinox[®]
plus

-  Stal nierdzewna VA
-  Chrom plisk GC
-  Chrom mat MC
-  Złoty polisk GO

-  Ø 10 / 15 / 18 mm
-  5 / 10 / 15 / 20 mm



Basel-18-20-VA
Basel-18-15-VA
Basel-18-10-VA
Basel-18-05-VA

Basel-18-20-GC
Basel-18-15-GC
Basel-18-10-GC
Basel-18-05-GC

Basel-18-20-MC
Basel-18-15-MC
Basel-18-10-MC
Basel-18-05-MC

Basel-18-20-GO Ø 18 mm
Basel-18-15-GO
Basel-18-10-GO
Basel-18-05-GO

Basel-15-20-VA
Basel-15-15-VA
Basel-15-10-VA
Basel-15-05-VA

Basel-15-20-GC
Basel-15-15-GC
Basel-15-10-GC
Basel-15-05-GC

Basel-15-20-MC
Basel-15-15-MC
Basel-15-10-MC
Basel-15-05-MC

Basel-15-20-GO Ø 15 mm
Basel-15-15-GO
Basel-15-10-GO
Basel-15-05-GO

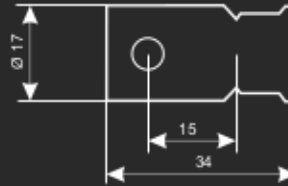
Basel-10-20-VA
Basel-10-15-VA
Basel-10-10-VA
Basel-10-05-VA

Basel-10-20-GC
Basel-10-15-GC
Basel-10-10-GC
Basel-10-05-GC

Basel-10-20-MC
Basel-10-15-MC
Basel-10-10-MC
Basel-10-05-MC

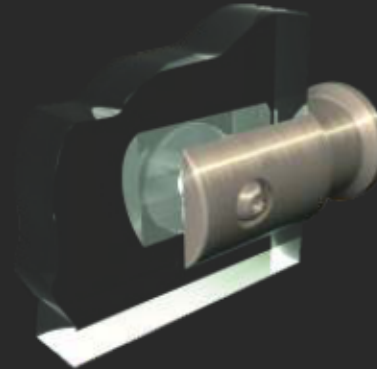
Basel-10-20-GO Ø 10 mm
Basel-10-15-GO
Basel-10-10-GO
Basel-10-05-GO

GDANSK

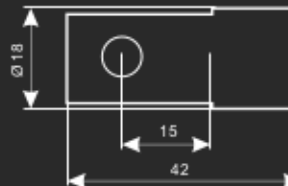


Gdansk

- Ø 17 mm
- 1...8 mm
- 15 mm
- Ø 4...6 mm

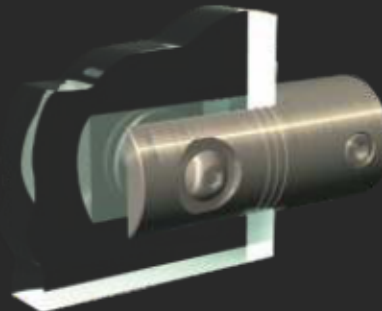





POZNAN



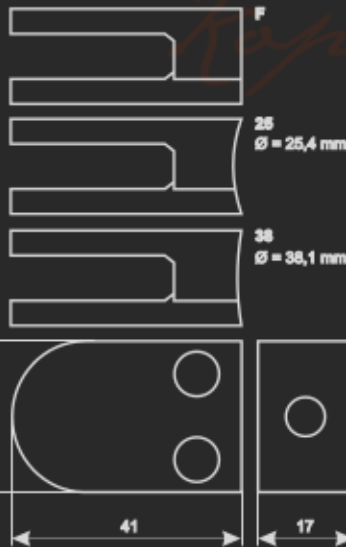
Poznan

- Ø 18 mm
- 4...10 mm
- 15 mm
- Ø 5 mm

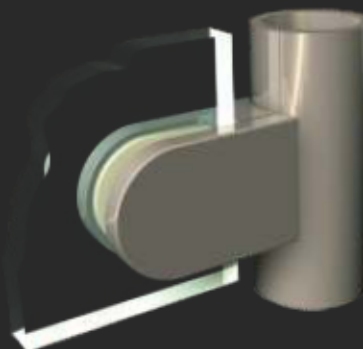
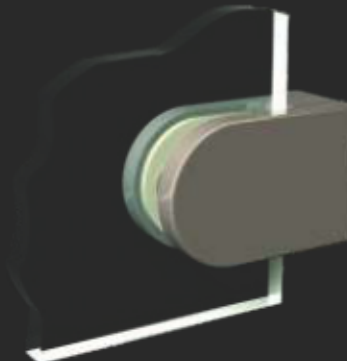
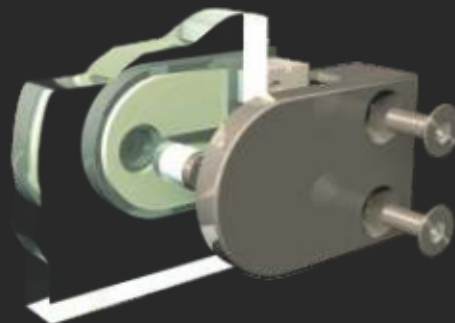


-  Kopenhagen F
-  Kopenhagen 25
-  Kopenhagen 38

-  26 x 41 mm
-  2 / 4 / 6 / 8 mm
-  nie dotyczy



KOPENHAGEN



- Kopenhagen D 2
- Kopenhagen D 4
- Kopenhagen D 6
- Kopenhagen D 8

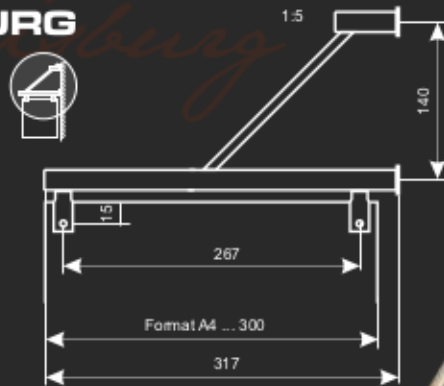





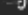
Gumowa podkładka

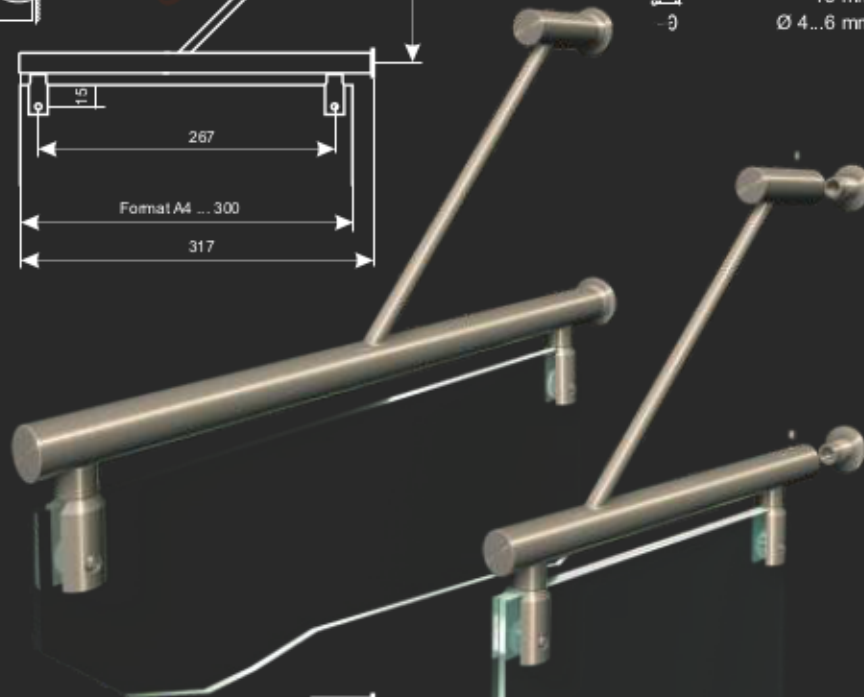
PEŁNA CHATA
Dystrybutor w Polsce




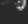
citinox[®]
plus

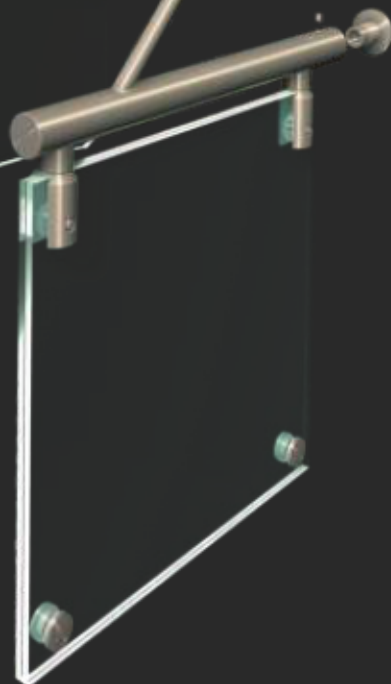
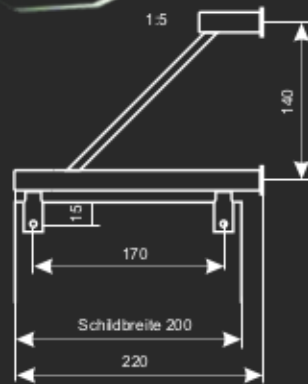
DUISBURG



-  Duisburg 300
-  2 ... 8 mm
-  15 mm
-  Ø 4...6 mm



-  Duisburg 200
-  2 ... 8 mm
-  15 mm
-  Ø 4...6 mm



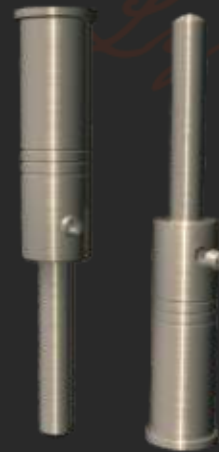
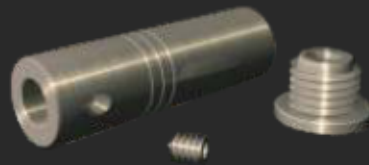
PEŁNA CHATA
Dystrybutor w Polsce

citinox[®]
plus



Lyon

Ø 18 mm
Ø 6 mm

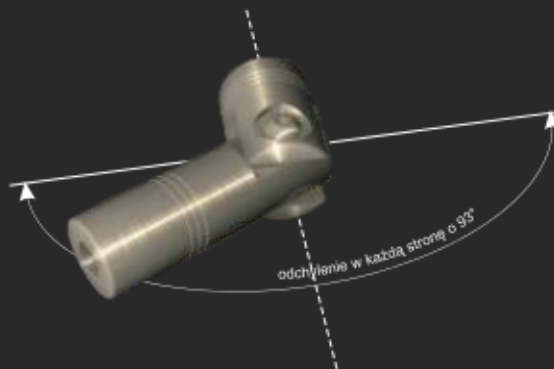
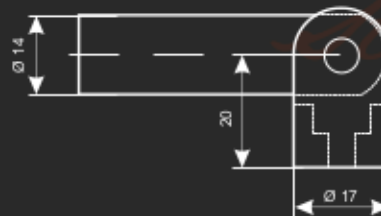


LYON

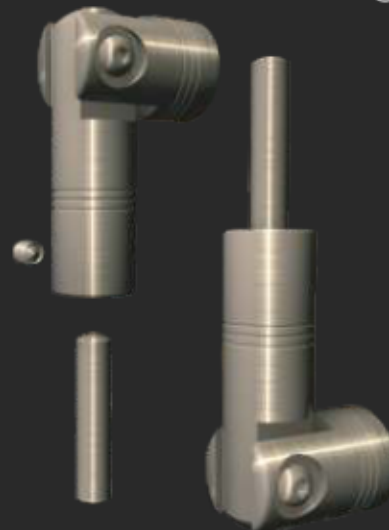


Stockholm

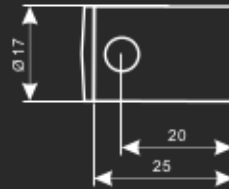
Ø 14 mm
Ø 6 mm



STOCKHOLM



DUBLIN



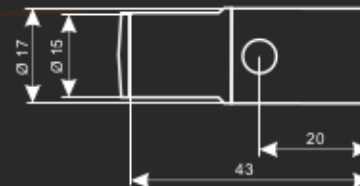
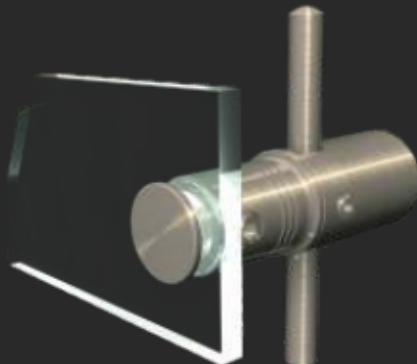
Dublin

Ø 17 mm

Ø 6 mm

20 mm

BELFAST



Belfast

Ø 17 mm

Ø 6 mm

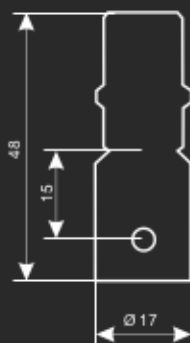
20 mm

11 mm



Leipzig

- Ø 17,0 mm
- Ø 6 mm
- 1...8 mm
- Ø 4...6 mm
- 15 mm

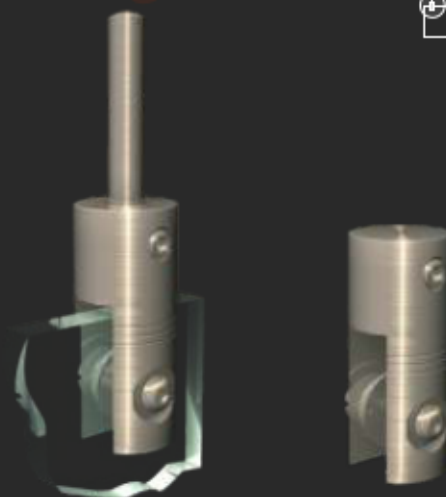
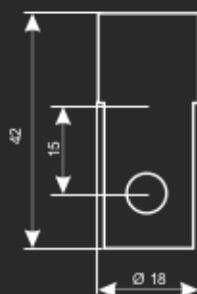


LEIPZIG



Krakau

- Ø 18 mm
- Ø 6 mm
- 3...10 mm
- Ø 5... 6 mm
- 15 mm



KRAKAU



APELDOORN



Apeldoorn

Ø 11,0 mm
Ø 6 mm
2...6 mm
nie dotyczy

Wyłącznie do tworzyw sztucznych

ROTTERDAM



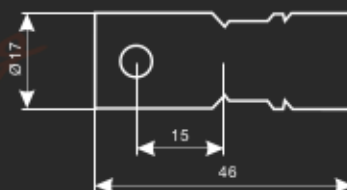
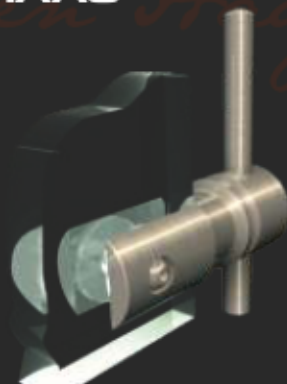
Rotterdam

Ø 14,0 mm
Ø 6 mm
3...8 mm
keine

Wyłącznie do tworzyw sztucznych

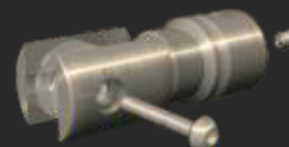


DEN HAAG



Den Haag

Ø 17,0 mm
Ø 6 mm
1...8 mm
Ø 4...6 mm



-  Utrecht
-  Ø 11 mm
-  Ø 6 mm
-  2...6 mm
-  nie dotyczy

Wyłącznie do tworzyw sztucznych



UTRECHT

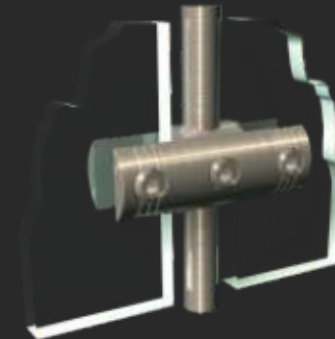






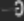
-  Amsterdam
-  Ø 14 mm
-  Ø 6 mm
-  3...6 mm
-  nie dotyczy

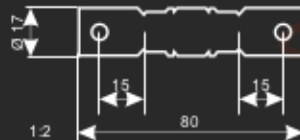
Wyłącznie do tworzyw sztucznych



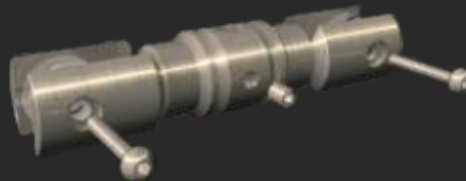
AMSTERDAM



-  Eindhoven
-  Ø 17 mm
-  Ø 6 mm
-  1...8 mm
-  Ø 4...6 mm



EINDHOVEN



BURGAS

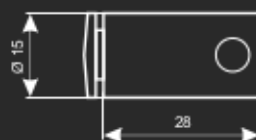
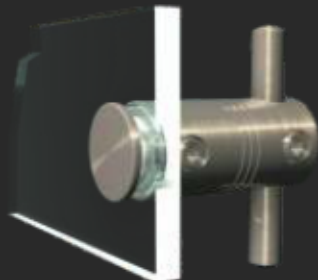


Burgas

- Ø 11 mm
- Ø 6 mm
- 2...5 mm
- Ø 9 mm

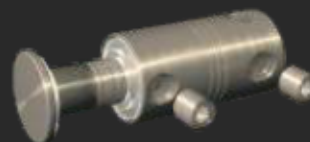


SOFIA

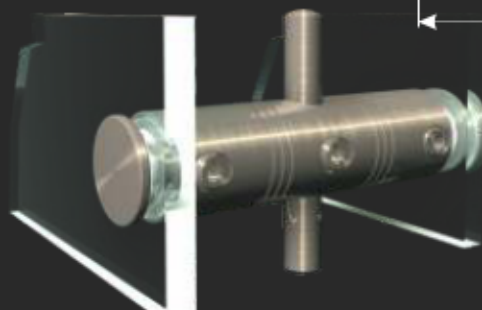


Sofia

- Ø 15 mm
- Ø 6 mm
- 2...10 mm
- Ø 11 mm



VARNA



Varna

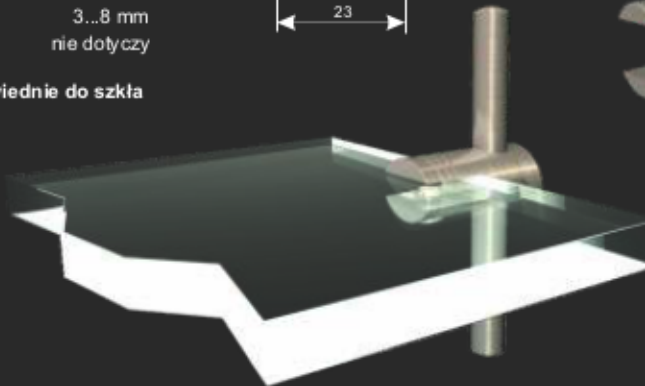
- Ø 15 mm
- Ø 6 mm
- 2...6 mm
- Ø 11 mm



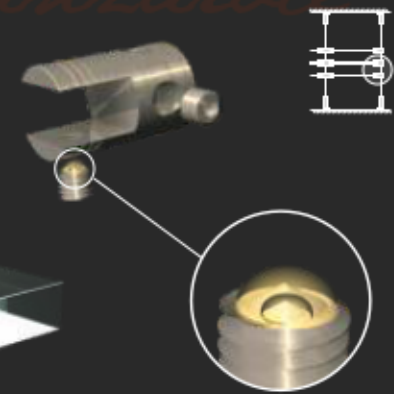


- $\varnothing 14$ mm
- $\varnothing 6$ mm
- 3...8 mm
- nie dotyczy

Odpowiednie do szkła

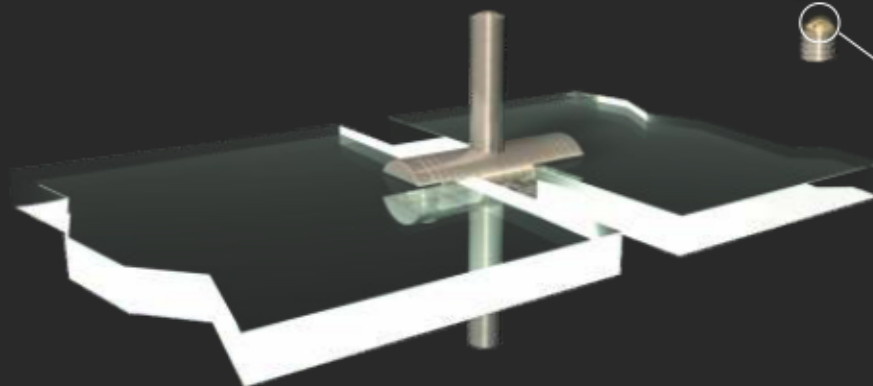


LANZAROTE

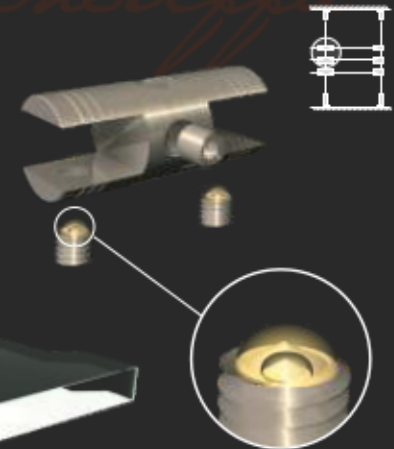


- $\varnothing 14$ mm
- $\varnothing 6$ mm
- 3...8 mm
- nie dotyczy

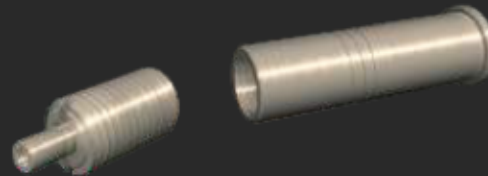
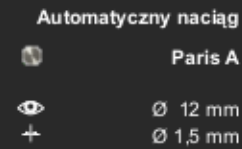
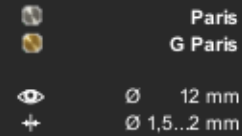
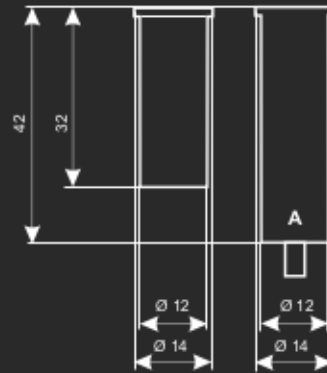
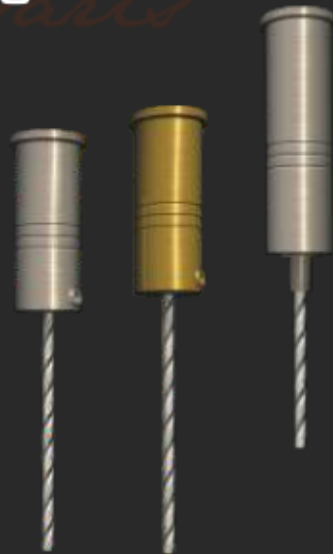
Odpowiednie do szkła



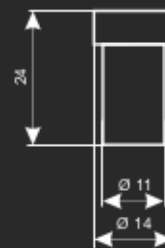
TENERIFFA



PARIS



MARSEILLE

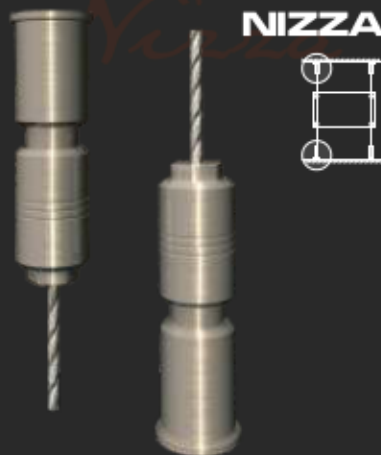




Nizza



Ø 14 mm
Ø 1,5...2 mm



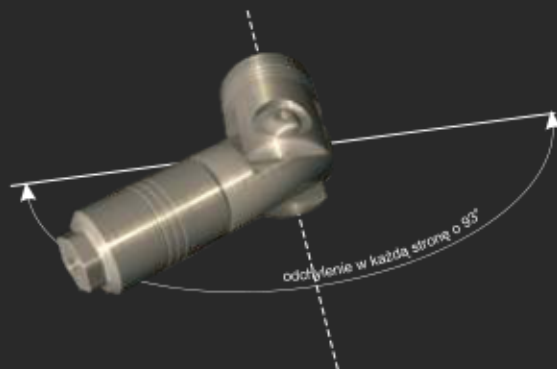
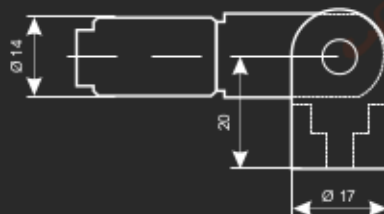
NIZZA



Helsinki



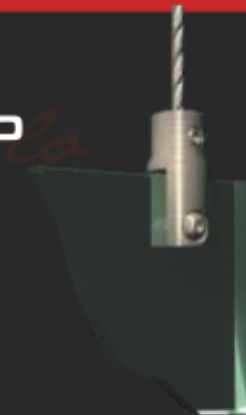
Ø 14 mm
Ø 1,5...2 mm
20 mm



HELSINKI



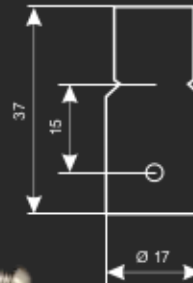
OSLO



Oslo

- Ø 11 mm
- Ø 1,5 mm
- 1...6 mm
- Ø 4...5 mm
- 9 mm

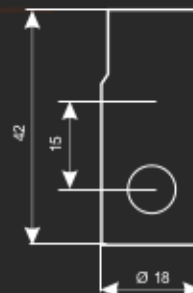
DORTMUND



Dortmund G Dortmund



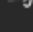
- Ø 17 mm
- Ø 1,5...2 mm
- 1...8 mm
- Ø 4...6 mm
- 15 mm

FRANKFURT

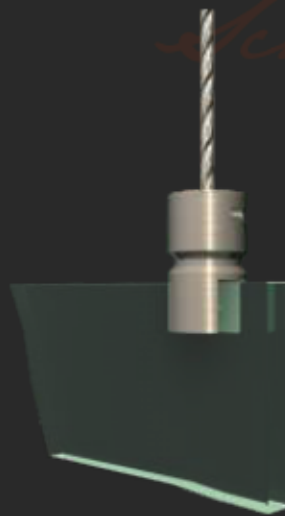


Frankfurt

- Ø 18 mm
- Ø 1,5...2 mm
- 3...10 mm
- Ø 5...6 mm
- 15 mm

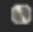



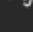
-  Schwerin
-  Ø 11 mm
-  Ø 1,5 mm
-  3...6 mm
-  nie dotyczy

Wyłącznie do tworzyw sztucznych



SCHWERIN

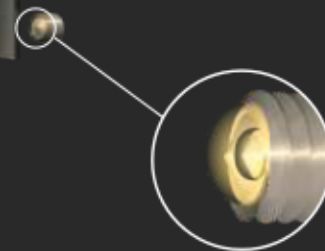


-  Oldenburg
-  Ø 14 mm
-  Ø 1,5 mm
-  3...6 mm
-  nie dotyczy

Odpowiednie do szkła



OLDENBURG



LÜTTICH



- Lüttich
- Ø 11,0 mm
- + Ø 1,5...2 mm
- ↓ 3...6 mm
- Ø nie dotyczy

Wyłącznie do tworzyw sztucznych

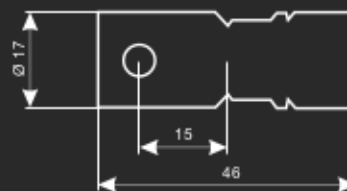
BRÜSSEL



- Brüssel
- Ø 14,0 mm
- + Ø 1,5...2 mm
- ↓ 3...8 mm
- Ø nie dotyczy

Wyłącznie do tworzyw sztucznych

GENT

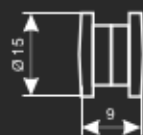


- Gent
- Ø 17,0 mm
- + Ø 1,5...2 mm
- ↓ 1...8 mm
- Ø Ø 4...6 mm



Budapest

- Ø 15 mm
- 5...10 mm
- Ø 11 mm

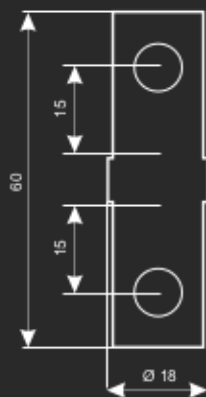


BUDAPEST

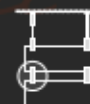


Istanbul

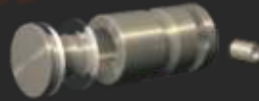
- Ø 18 mm
- 3...10 mm
- Ø 5...6 mm
- 15 mm



ISTANBUL



ARAD



| | |
|--|--------------|
| | Arad |
| | Ø 11 mm |
| | Ø 1,5...2 mm |
| | 2...5 mm |
| | Ø 9 mm |

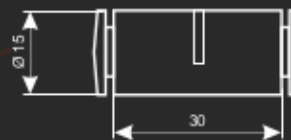
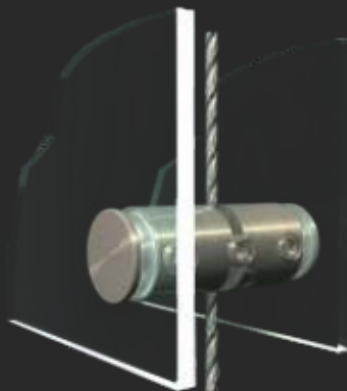
BUKAREST



| | |
|--|--------------|
| | Bukarest |
| | Ø 15 mm |
| | Ø 1,5...2 mm |
| | 2...10 mm |
| | Ø 11 mm |



KONSTANCA



| | |
|--|--------------|
| | Konstanca |
| | Ø 15 mm |
| | Ø 1,5...2 mm |
| | 2...6 mm |
| | Ø 11 mm |



-  Anderlecht
-  Ø 11 mm
-  Ø 1,5...2 mm
-  3...6 mm
-  nie dotyczy

Wyłącznie do tworzyw sztucznych



ANDERLECHT

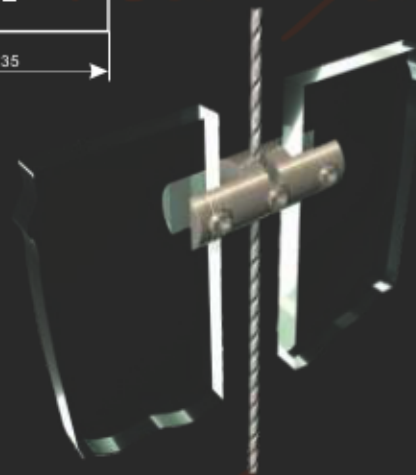







-  Antwerpen
-  Ø 14 mm
-  Ø 1,5...2 mm
-  3...8 mm
-  nie dotyczy

Wyłącznie do tworzyw sztucznych



ANTWERPEN



-  Brügge
-  Ø 17 mm
-  Ø 1,5...2 mm
-  1...8 mm
-  Ø 4...6 mm



BRÜGGE

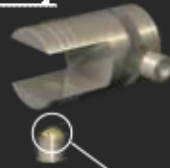


IBIZA

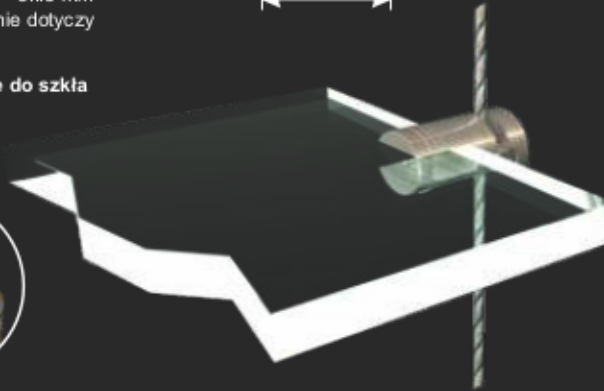
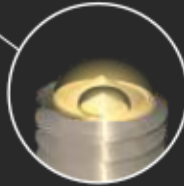


Ibiza

\varnothing 14 mm
 \varnothing 1,5...2 mm
 3...8 mm
 nie dotyczy



Odpowiednie do szkła

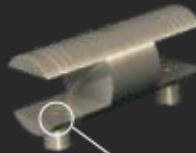


MALLORCA

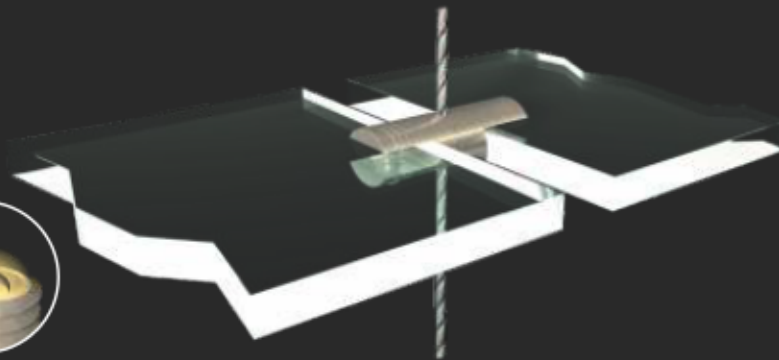
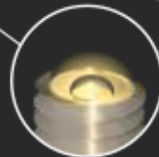


Mallorca

\varnothing 14 mm
 \varnothing 1,5...2 mm
 3...8 mm
 nie dotyczy



Odpowiednie do szkła



PEŁNA CHATA

Dystrybutor w Polsce

citinox[®] plus

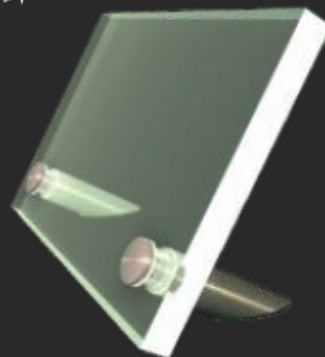


Salzburg

Ø 11 mm
28°
3...8 mm
15 mm
Ø 9 mm

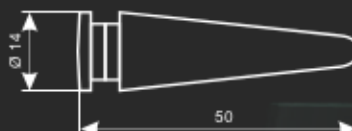


SALZBURG

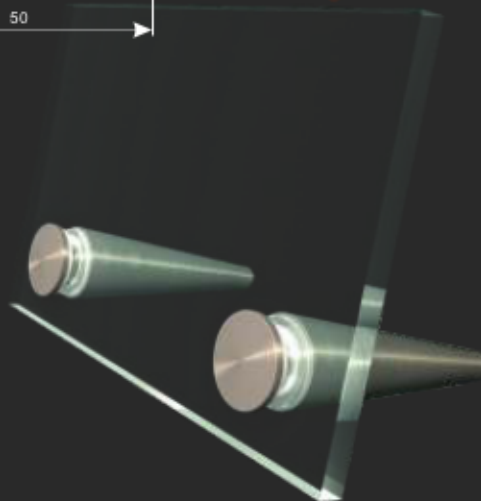
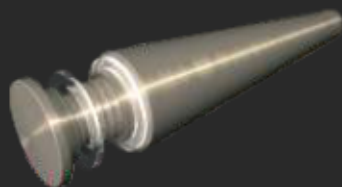


Graz

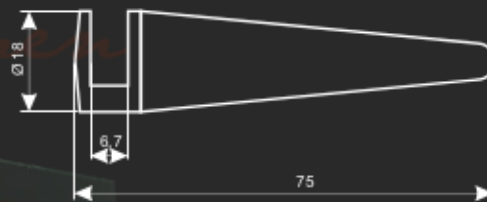
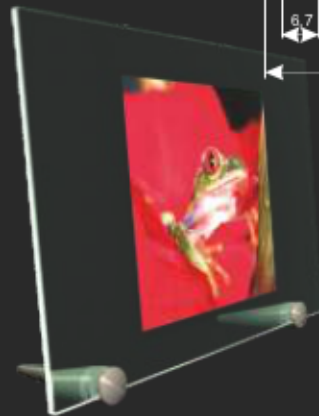
Ø 14 mm
4...10 mm
Ø 11 mm



GRAZ



BREMEN

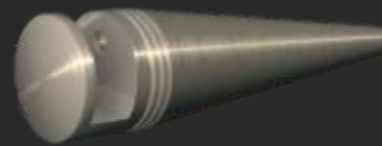


Bremen

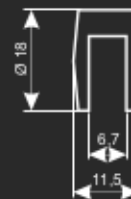
Ø 18 mm

3...6 mm

nie dotyczy



KIEL



Kiel

Ø 18 mm

...6 mm

nie dotyczy



PEŁNA CHATA

Dystrybutor w Polsce

citinox[®] plus

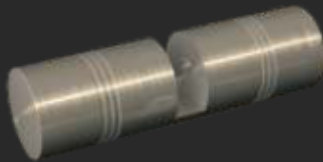


Hamburg I

Ø 18 mm
3...6 mm
nie dotyczy

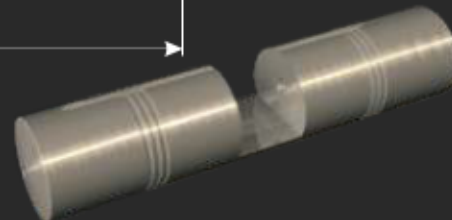
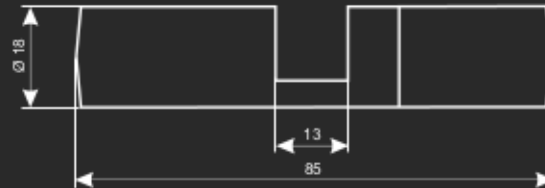


HAMBURG

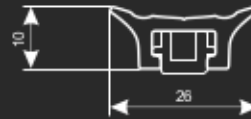


Hamburg II

Ø 18 mm
10...13 mm
nie dotyczy



DONAU



Donau



26 x 10 mm

max. długość 2500 mm

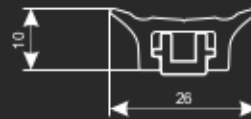
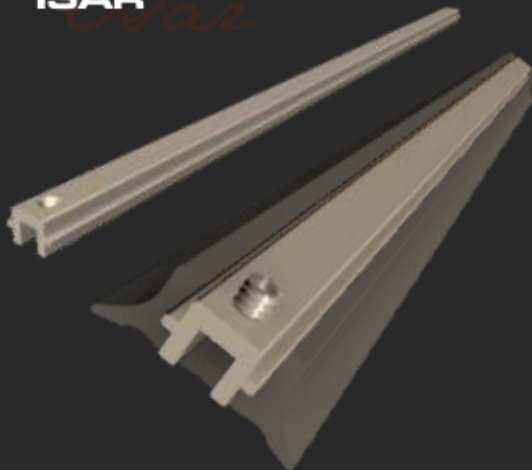


KORFU



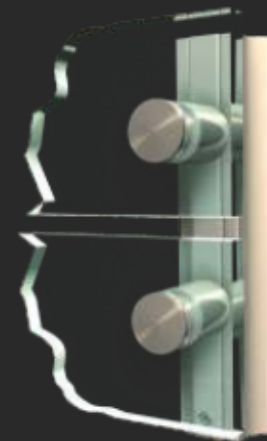
Korfu

ISAR



Isar

max. długość 2500 mm



PEŁNA CHATA

Dystrybutor w Polsce

citinox[®]
plus



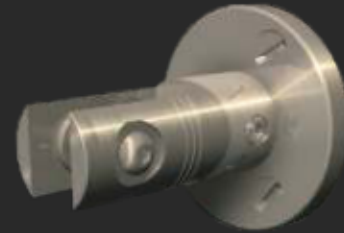
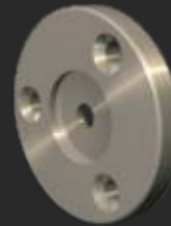
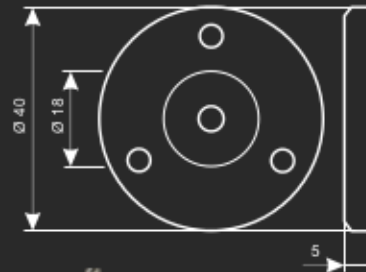
Athen



Ø 40 mm
+ 5 mm



Gdansk
Poznan
Dublin
Belfast
Lyon
Stockholm
Nizza
Helsinki
Paris



Athen **ATHEN**



Kos



Ø 1,5...2 mm


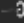


Kos **KOS**


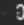
KRETA




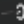
 **Kreta 148**


 30 x 148 mm
 Ø 9 mm

 **Kreta 150**

 30 x 150 mm
 Ø 9 mm

 **Kreta 210**

 30 x 210 mm
 Ø 9 mm

 Berlin
 Florenz

